



Larry K. Baldwin
Major Design Coordinator
Oncor Electric Delivery
777 Main Street, Suite 707
Fort Worth, Tx 76102

August 16, 2023

Hopkins County Courthouse
118 Church St.
Sulfur Springs, TX 75482

Attn: Precinct 4

Greetings,

Oncor Electric Delivery is requesting permission to construct electric distribution facilities along CR 4731.

Construction prints are attached and all facilities meet clearance requirements of 22 ft.

For additional information or questions please contact Paul Elkins at pelkins@msngr.com and please send a copy of the approval to Sophia Torres at storres@msngr.com.

Sincerely,

Larry K Baldwin

Larry K. Baldwin
Major Design Coordinator
Oncor | PMDS Program Services

Cell Phone: 469.261.0649
larry.baldwin@oncor.com

Approved: Denied:

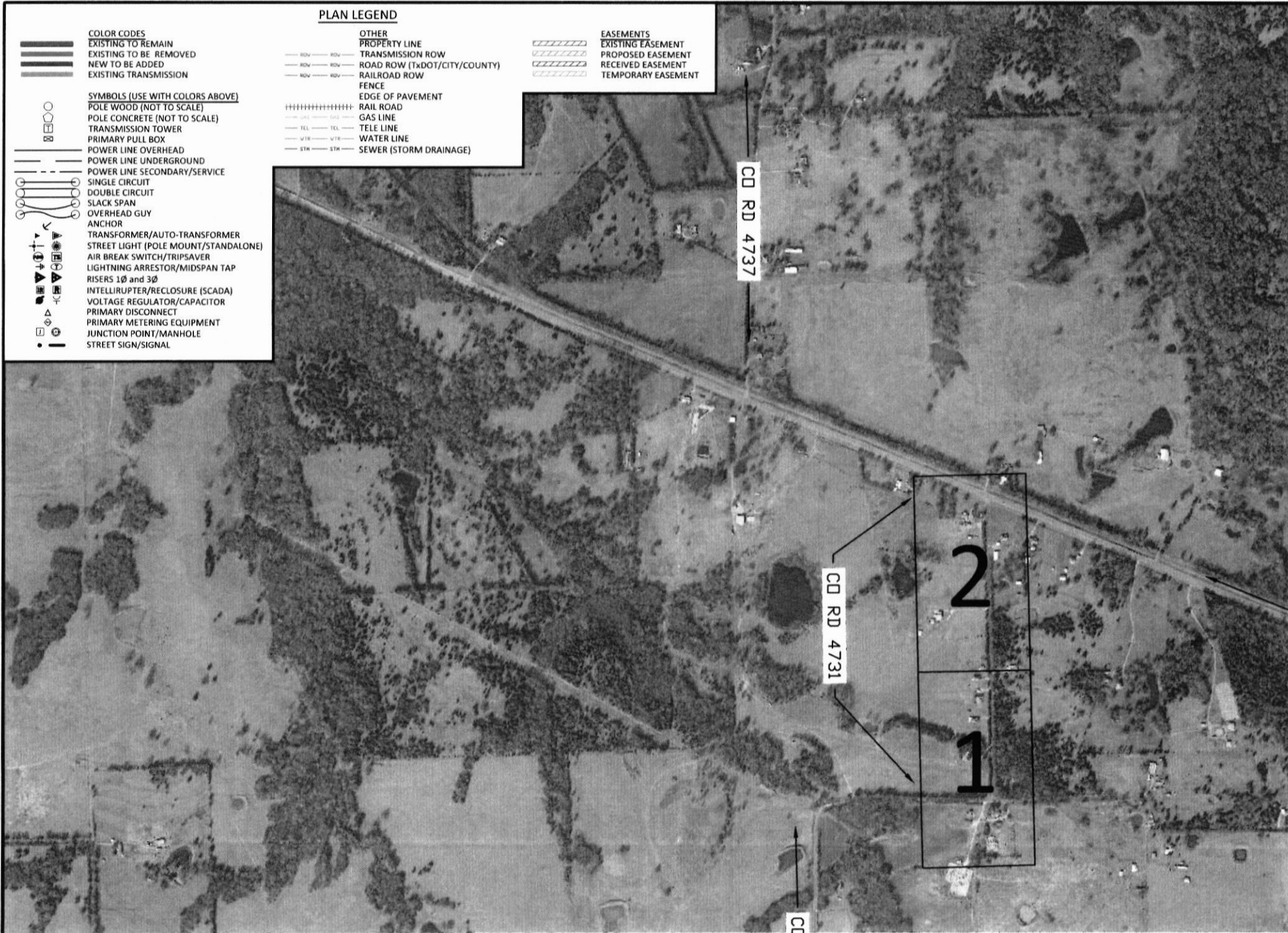
Authorized Signature: *[Signature]* Date: 8-17-23

PLAN LEGEND

- COLOR CODES**
- EXISTING TO REMAIN
 - EXISTING TO BE REMOVED
 - NEW TO BE ADDED
 - EXISTING TRANSMISSION
- SYMBOLS (USE WITH COLORS ABOVE)**
- POLE WOOD (NOT TO SCALE)
 - POLE CONCRETE (NOT TO SCALE)
 - TRANSMISSION TOWER
 - PRIMARY PULL BOX
 - POWER LINE OVERHEAD
 - POWER LINE UNDERGROUND
 - POWER LINE SECONDARY/SERVICE
 - SINGLE CIRCUIT
 - DOUBLE CIRCUIT
 - SLACK SPAN
 - OVERHEAD GUY
 - ANCHOR
 - TRANSFORMER/AUTO-TRANSFORMER
 - STREET LIGHT (POLE MOUNT/STANDALONE)
 - AIR BREAK SWITCH/TRIPSAVER
 - LIGHTNING ARRESTOR/MIDSPAN TAP
 - RISERS 1Ø and 3Ø
 - INTELLIAPTER/RECLOSURE (SCADA)
 - VOLTAGE REGULATOR/CAPACITOR
 - PRIMARY DISCONNECT
 - PRIMARY METERING EQUIPMENT
 - JUNCTION POINT/MANHOLE
 - STREET SIGN/SIGNAL

- OTHER**
- PROPERTY LINE
 - TRANSMISSION ROW
 - ROAD ROW (TXDOT/CITY/COUNTY)
 - RAILROAD ROW
 - FENCE
 - EDGE OF PAVEMENT
 - RAIL ROAD
 - GAS LINE
 - TELE LINE
 - WATER LINE
 - SEWER (STORM DRAINAGE)

- EASEMENTS**
- EXISTING EASEMENT
 - PROPOSED EASEMENT
 - RECEIVED EASEMENT
 - TEMPORARY EASEMENT



CD RD 4737

CD RD 4731

CC

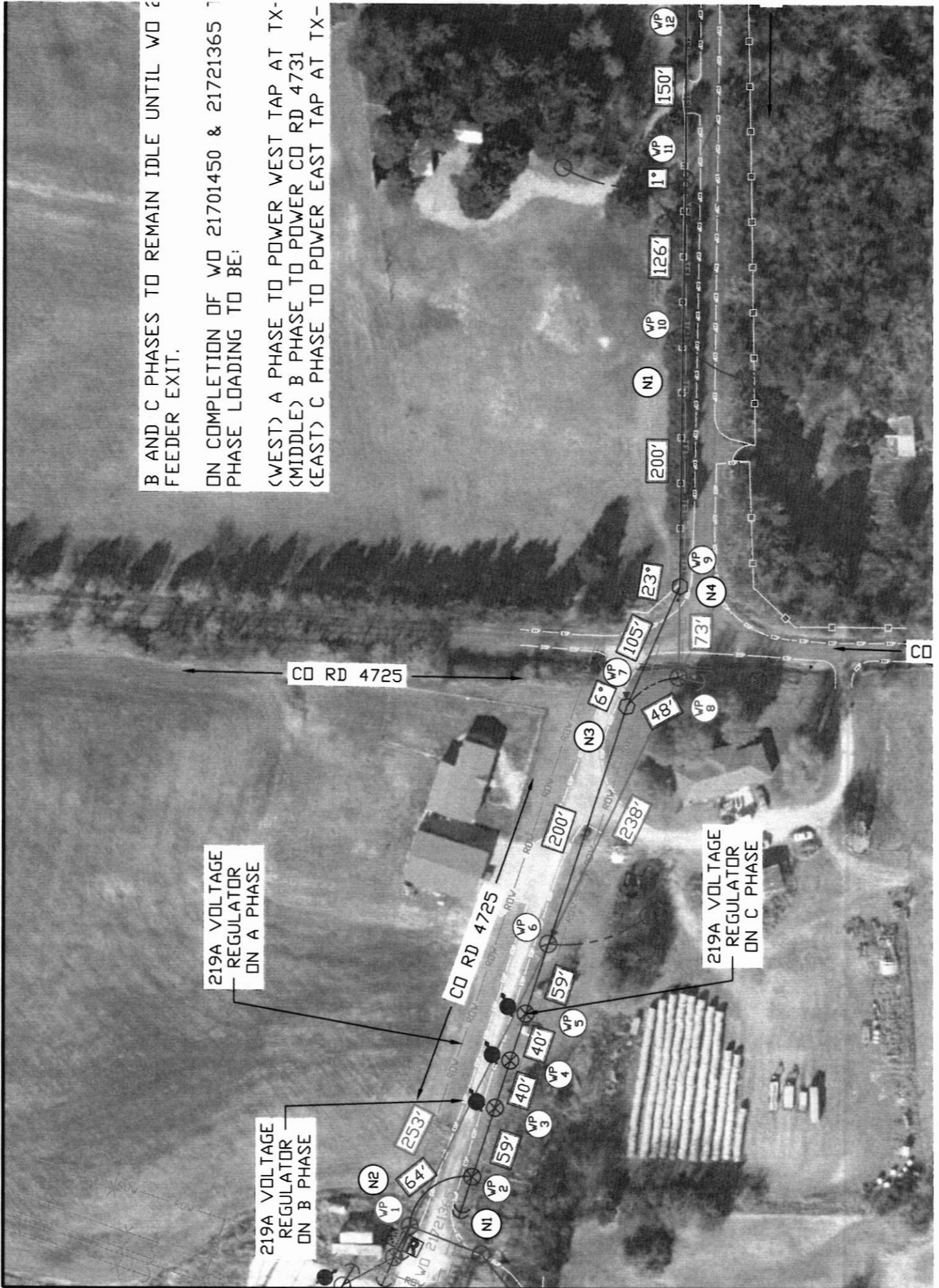
2

1

B AND C PHASES TO REMAIN IDLE UNTIL WD 21721365 FEEDER EXIT.

ON COMPLETION OF WD 21701450 & 21721365 PHASE LOADING TO BE:

(WEST) A PHASE TO POWER WEST TAP AT TX-
(MIDDLE) B PHASE TO POWER CD RD 4731
(EAST) C PHASE TO POWER EAST TAP AT TX-



MATCHLINE - REFER TO SHEET 1



B AND C PHASES TO REMAIN IDLE UNTIL WO 21721365 FEEDER EXIT.

ON COMPLETION OF WO 21701450 & 21721365 TRANSFER PHASE LOADING TO BE:

- <WEST> A PHASE TO POWER WEST TAP AT TX-11
- <MIDDLE> B PHASE TO POWER CO RD 4731
- <EAST> C PHASE TO POWER EAST TAP AT TX-11